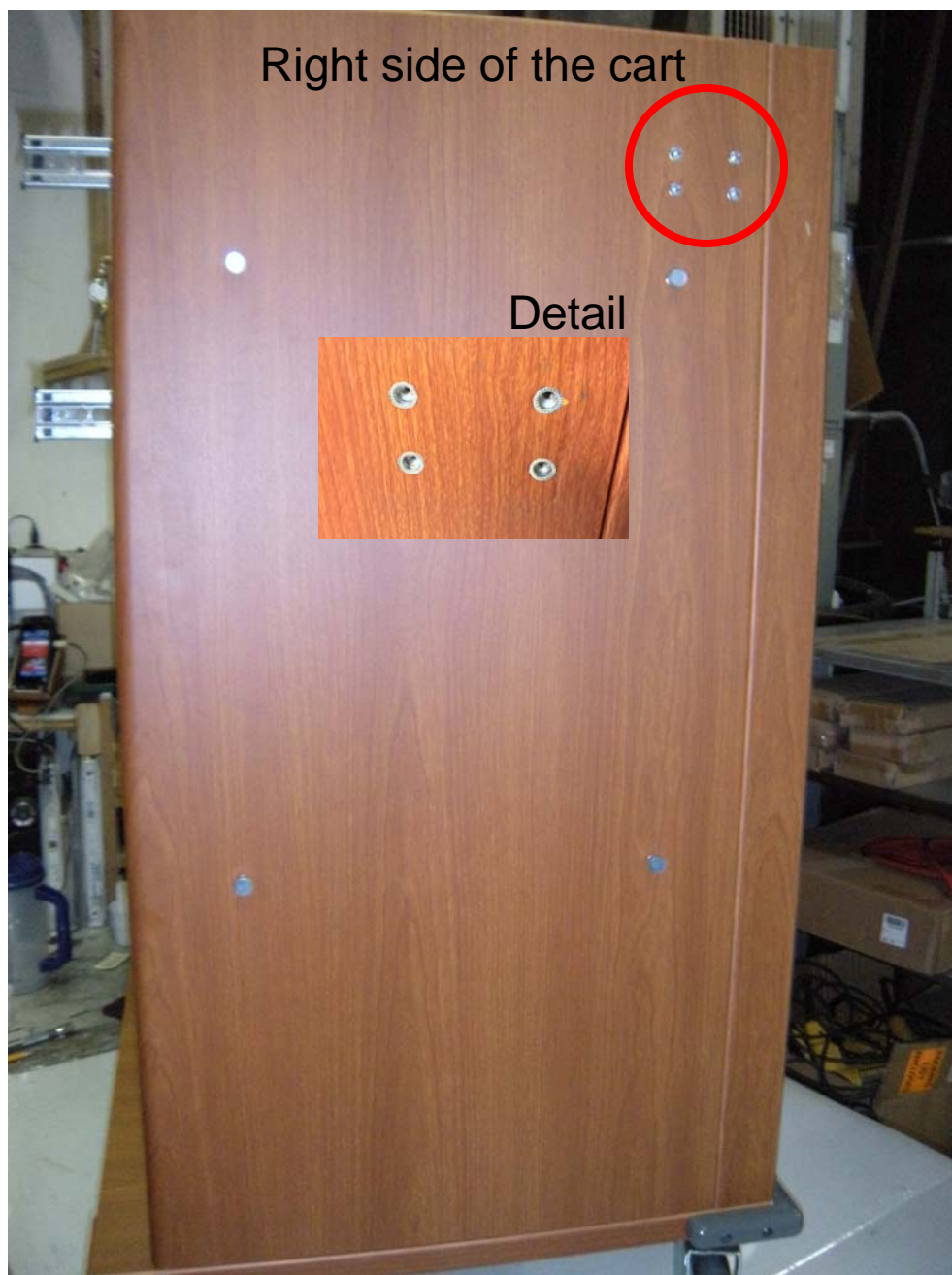
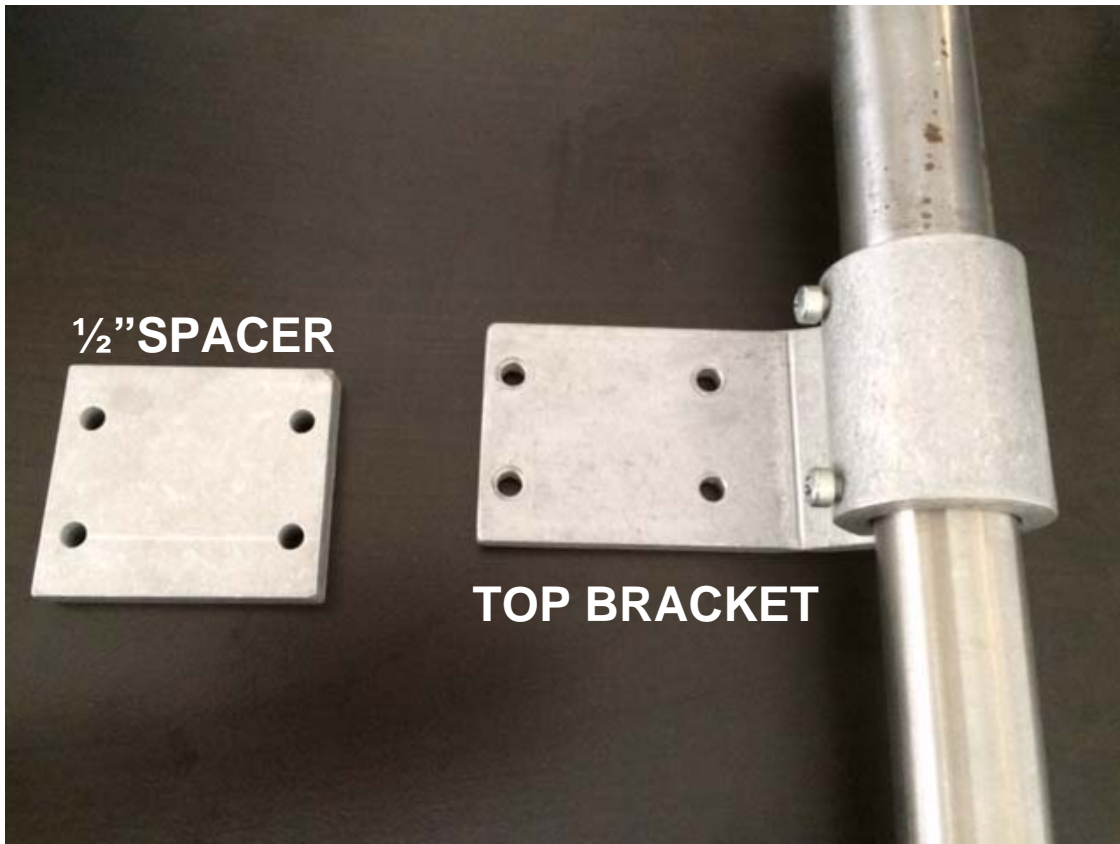


ENHANCED COMPUTER STAND INSTALLATION

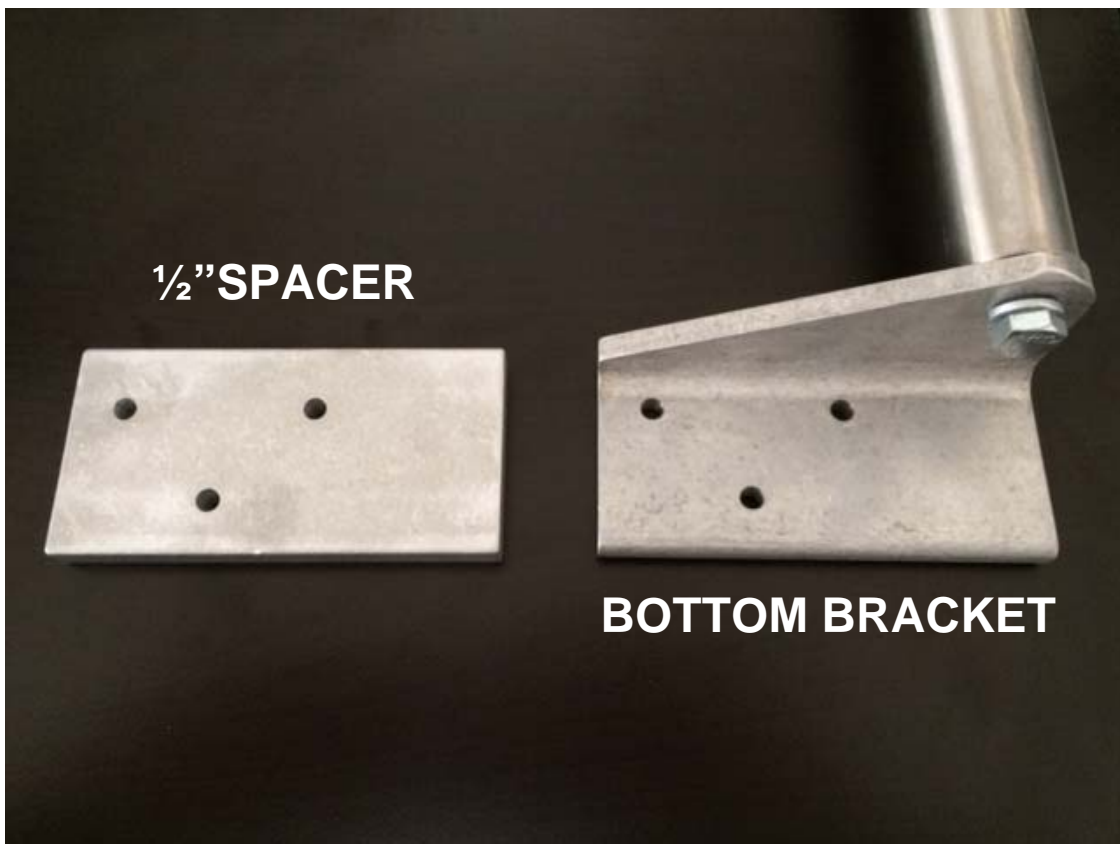
*applies to vinyl carts serial number 40,781-69,822

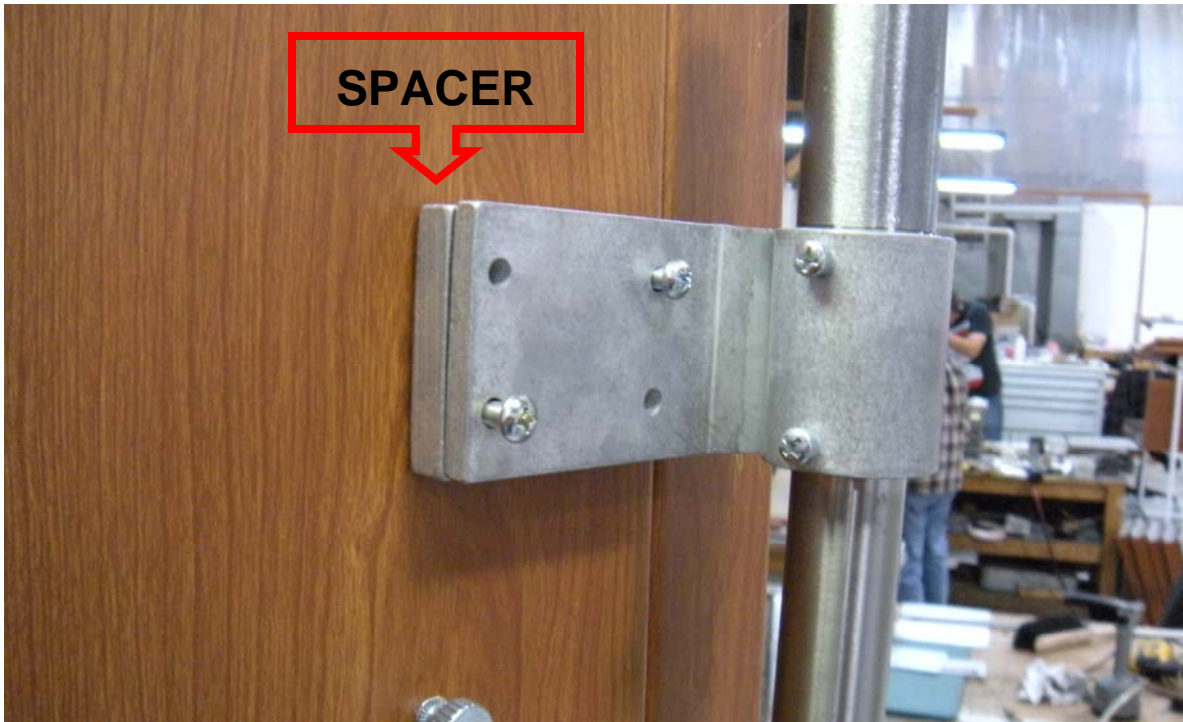


- Med carts have predrilled 4 hole pattern with threaded inserts



- Spacers are needed to clear the skirting around the top





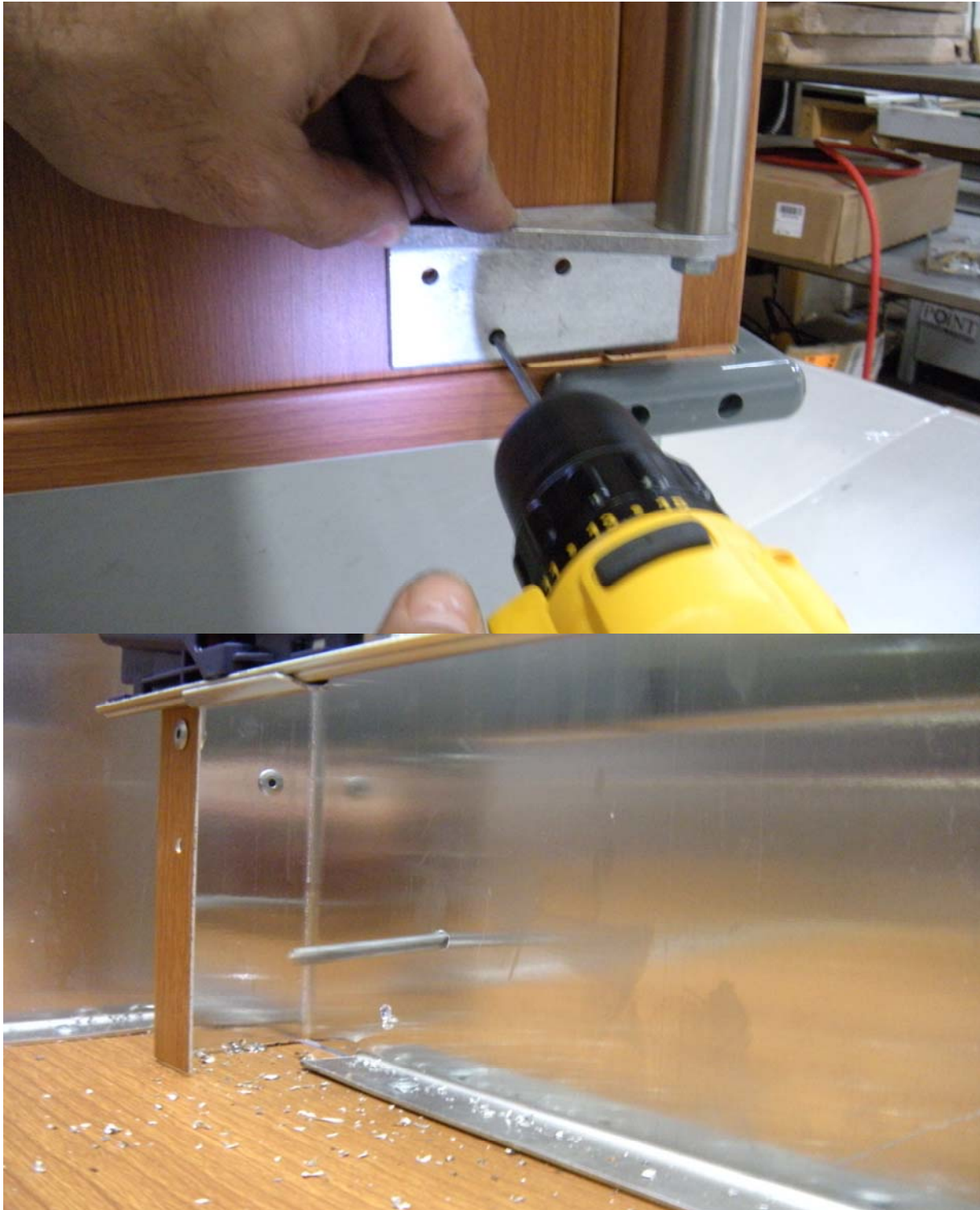
- Install the top bracket using the 4 x 1 ¼" screws
- The spacer goes between the cart body and the bracket
- Don't tighten the screws down completely. This allows for minor adjustment during installation of bottom bracket



- Remove the bottom drawer

- Using the bottom bracket as a template, drill 3 holes with a 3/16" drill bit

- If the bottom bracket does not sit flush with the side of the cart, loosen the 5/16" hex bolt and reposition.





- Install the bottom bracket using the 3 x 1 ¼” screws
- The spacer goes between the cart body and the bracket
- Use the supplied Keps nuts to secure bottom bracket



- Firmly secure all installation hardware



- Install “top tube with collar” and secure with set screw



- Install mechanical “Ergotron” portion of computer stand



**INSTRUCTIONS FOR ADJUSTING THE ARM'S
SPRING TENSION ARE SUPPLIED BY ERGOTRON**